

Open design competition World Sustainability Centre Afsluitdijk



World Sustainability Centre

- Experience centre
- Innovation
- Energy
- Water
- Nature



Competition Programme

- **IDEAS COMPETITION**
- the **programme** of the World Sustainability Centre
- the **location** of the proposed Centre
- the **building** or buildings in which that programme is housed



Design Proposals

- Express the intended ambition of **sustainability**
- Relate to the **cultural-historical significance** of the Afsluitdijk and the existing landscape and environmental values
- Be **inviting** for the public at large and for scientists and business people
- Be **flexible** enough to respond to changes in function.



Criteria

Proposals will be judged on:

- Inspiring and realistic vision
- Positive contribution to the landscape, cultural history and natural values of the Afsluitdijk
- Architecture in harmony with the ambition to create an inviting, flexible and enduring public centre?
- Potential to become a showcase or laboratory of innovation in the fields of energy and water



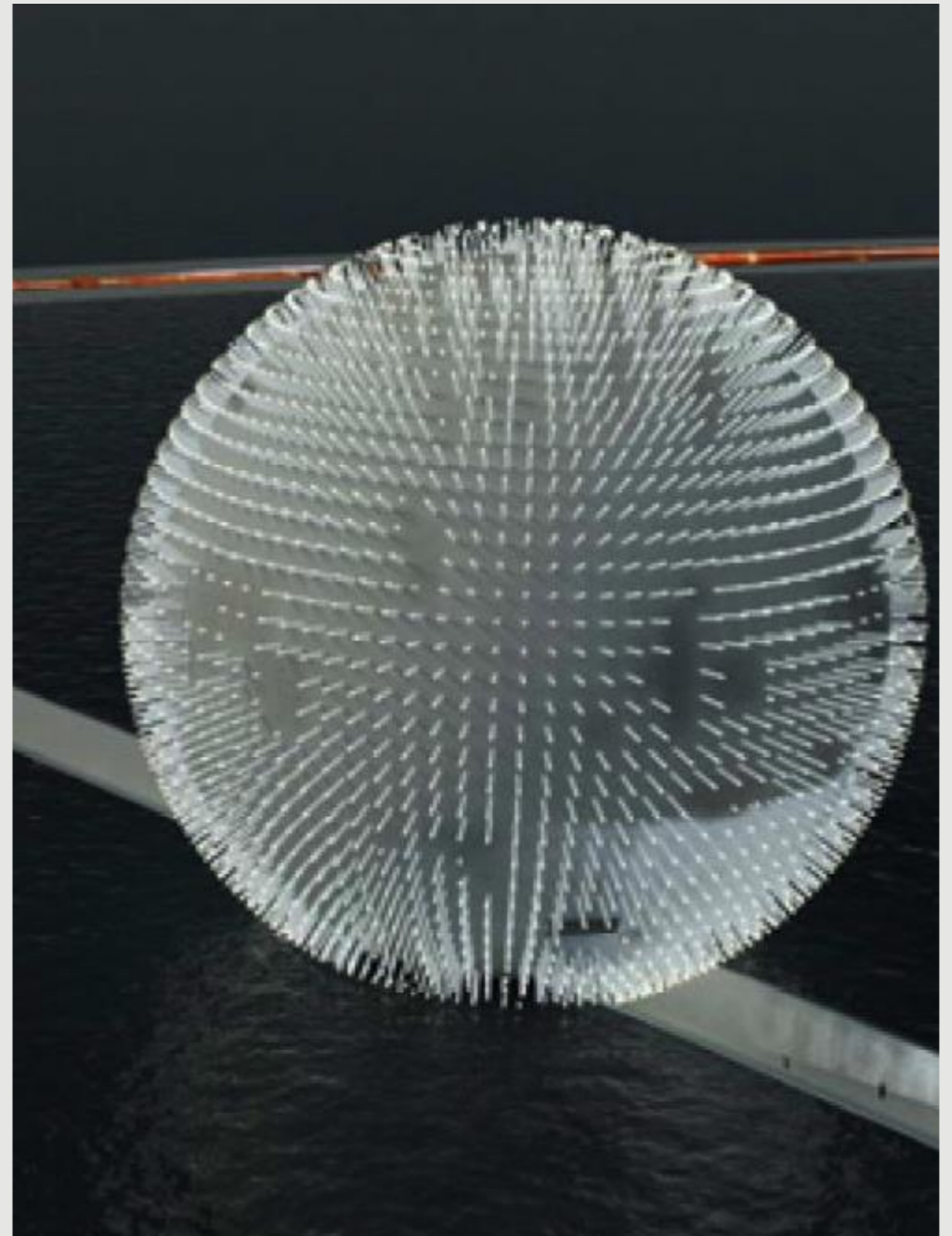
International jury

- Margreeth de Boer, voorzitter
- Sandra van Assen, landschapsarchitect
- Joost Conijn, artist
- Jan Olav Jensen, architect, Oslo
- Domingo Jiménez-Beltrán, engineer, Spanje
- Fons Verheijen, architect, Delft



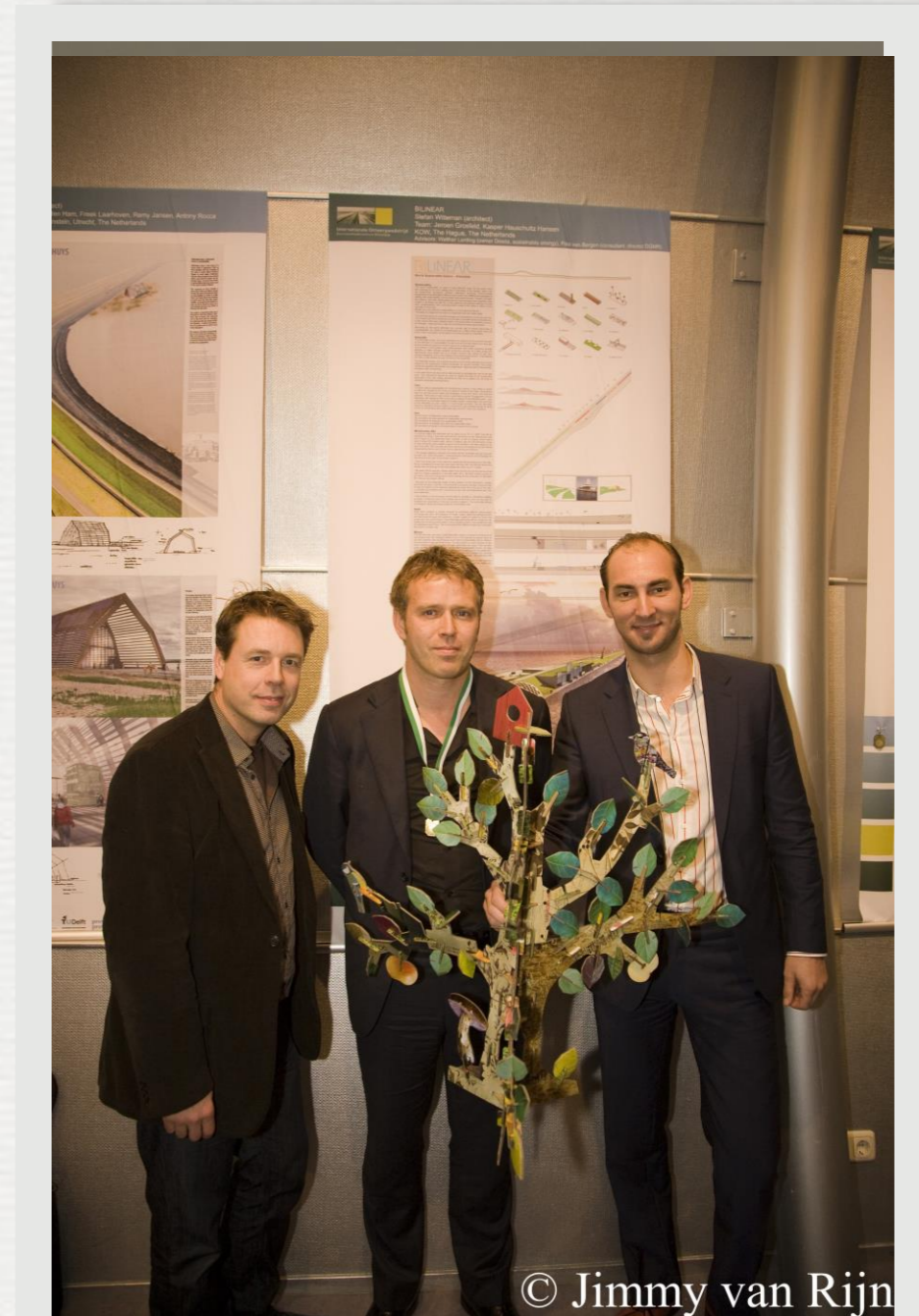
Expert committee

- Han Brezet, TU Delft, voorzitter
- Klaas Hoekstra, Sun Factory
- Henk Seinen, Seinen Ontwikkeling
- Henk Folmer, RUG, economie
- Pier Vellinga, Klimaat
- Cees Buisman, Wetsus, water technology
- Nynke Rixt Jukema, architect, landschap
- Han Vrijling, TU Delft, hydraulic engineering
- Hans van Meerendonk & Anne de Vries, marketing perspective
- Tineke van der Schoor, sustainable development



Results

- 80 entries, from all over the world
- 6 special issues raised
- 1 honourable mention
- 19 nominees
- 5 prize-winners
- 2 first prizes



© Jimmy van Rijn

Research

- Criteria Sustainable Building
- Innovative Skin-concepts
- Innovative Materials
- International Research

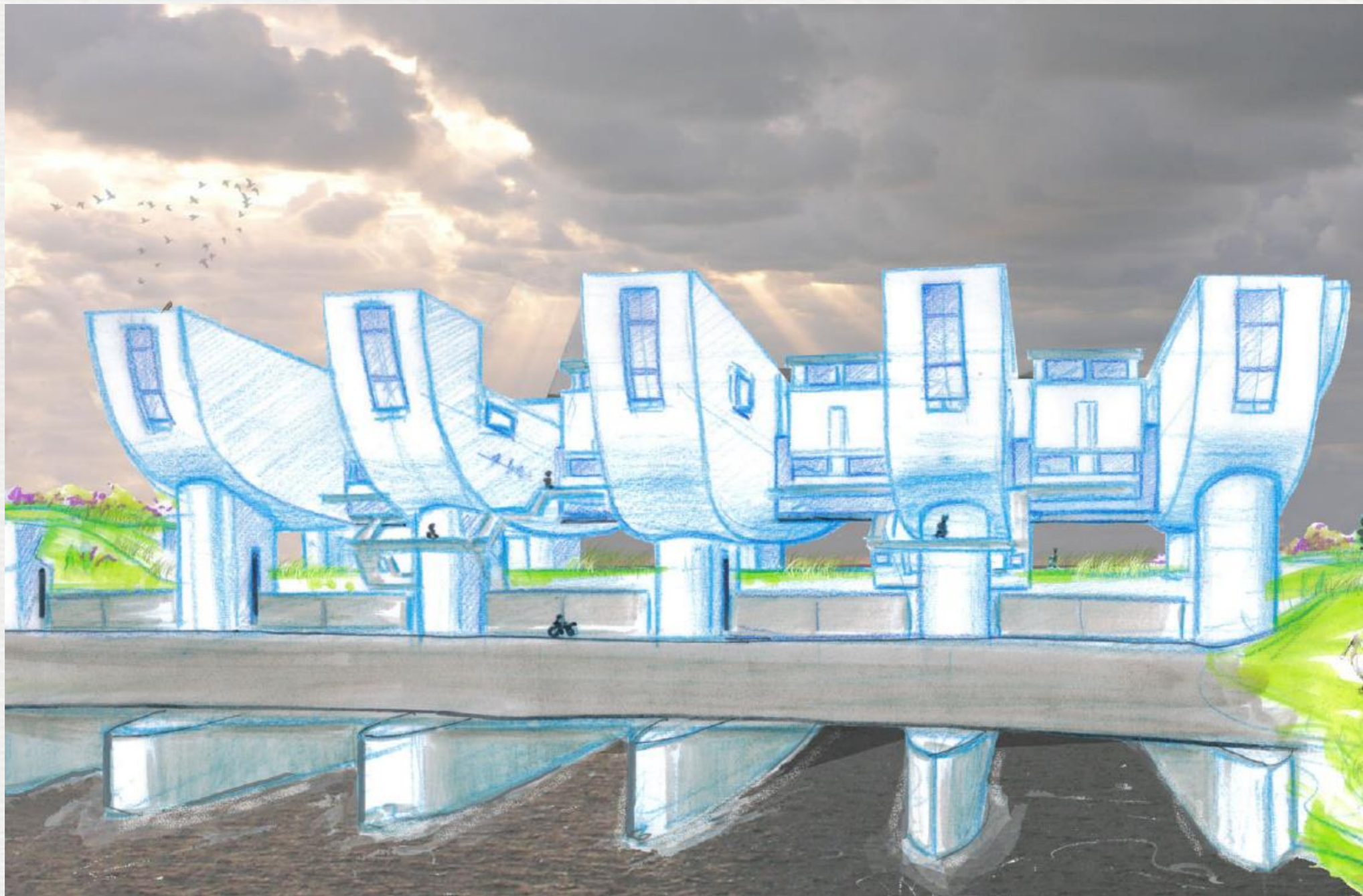


© Jimmy van Rijn

Citius Altius Fortius



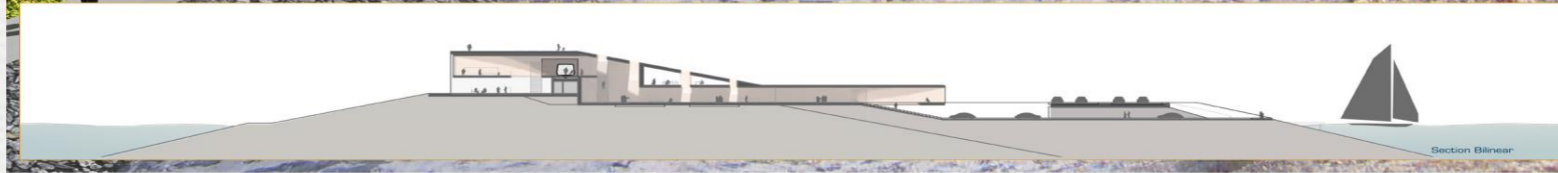
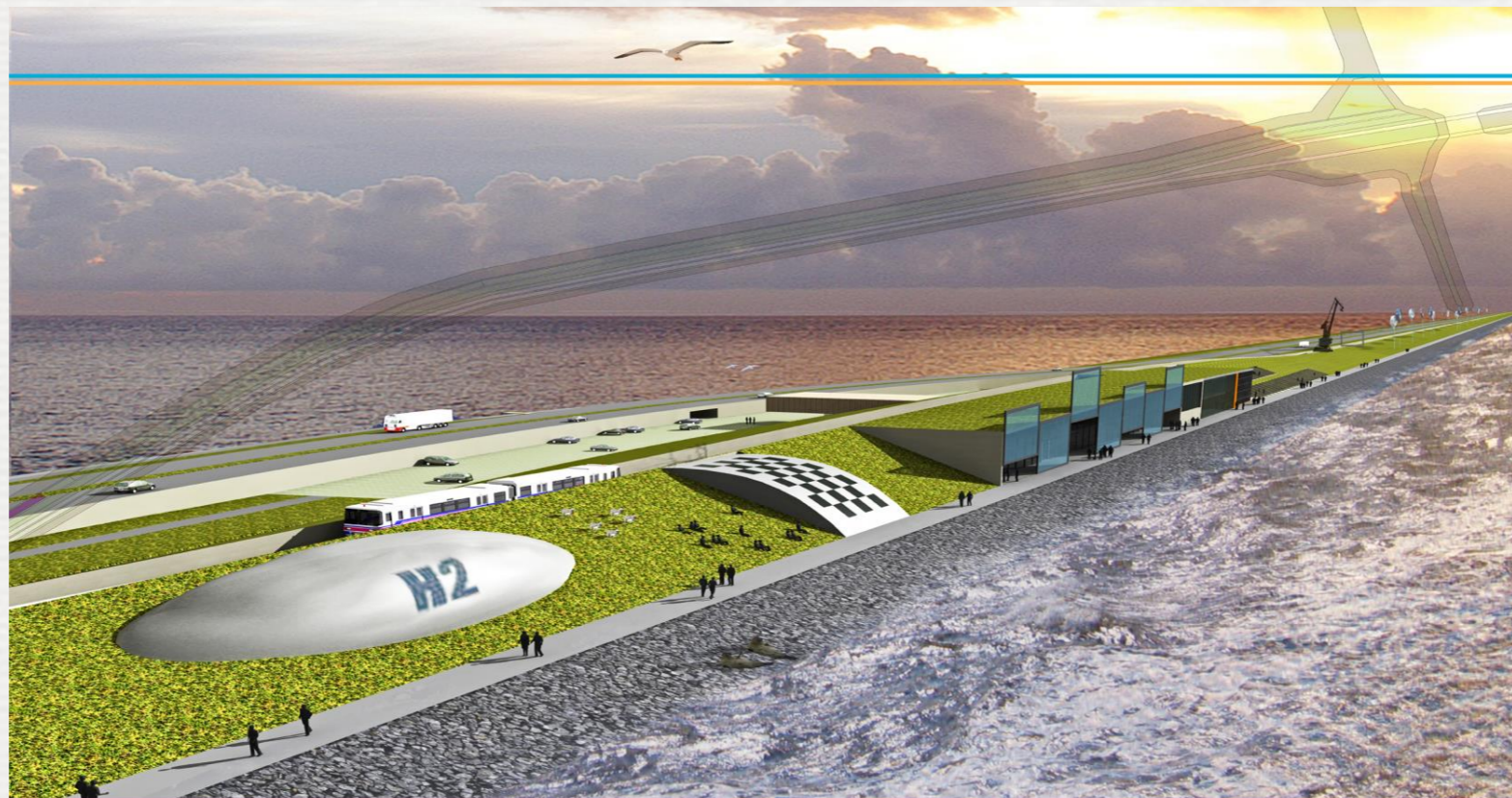
Linea Recta Barca Forta Ad Mare Arduus



World Sustainability Campus



Bilinear



Afsluitdijk Experience



Lakeview Bilinear



Plan Bilinear



Seaview Bilinear

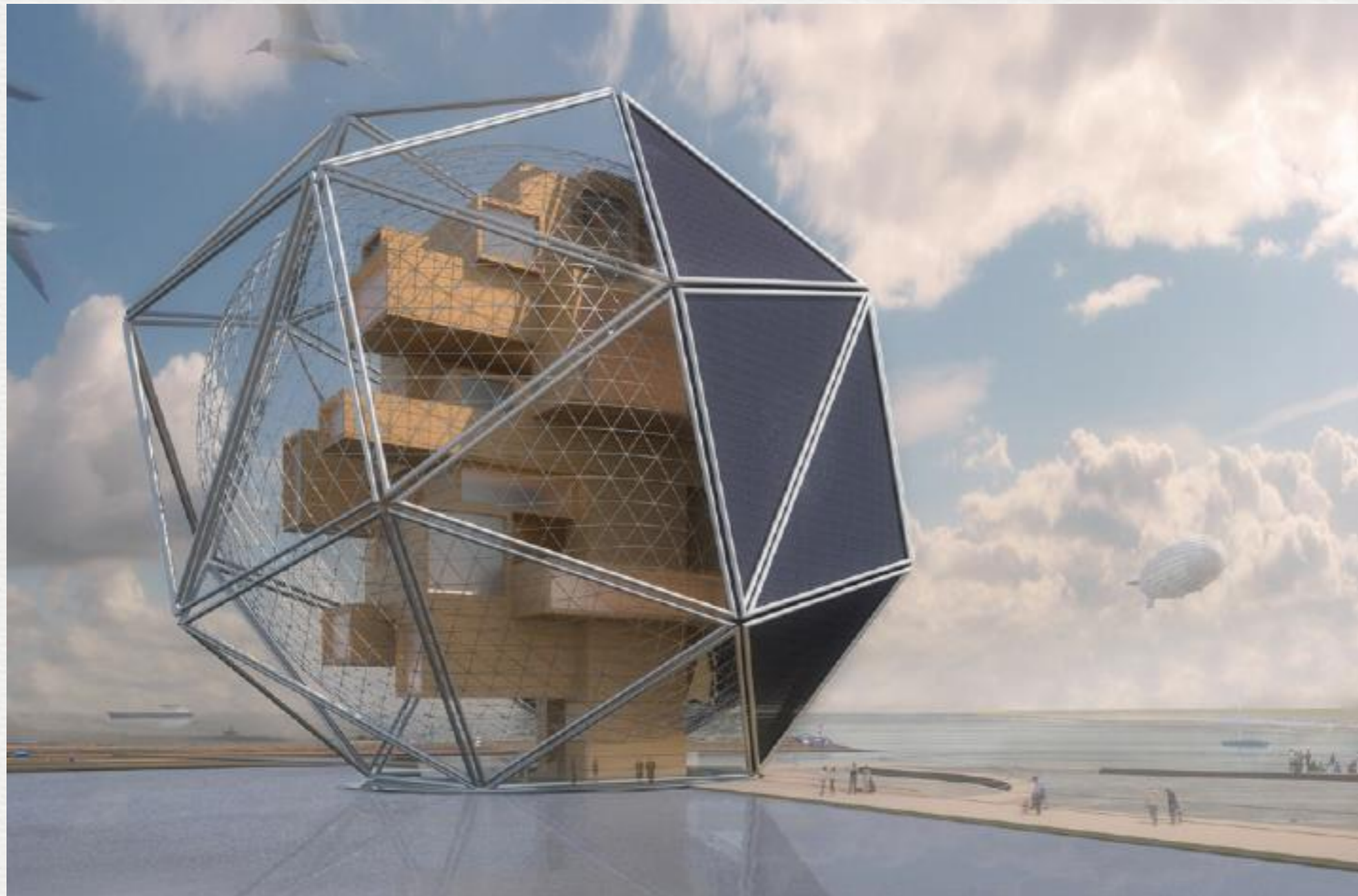
ESMFA



The Watt(er) Box



Super-Sustainable Snub-Cube



Drive on Water



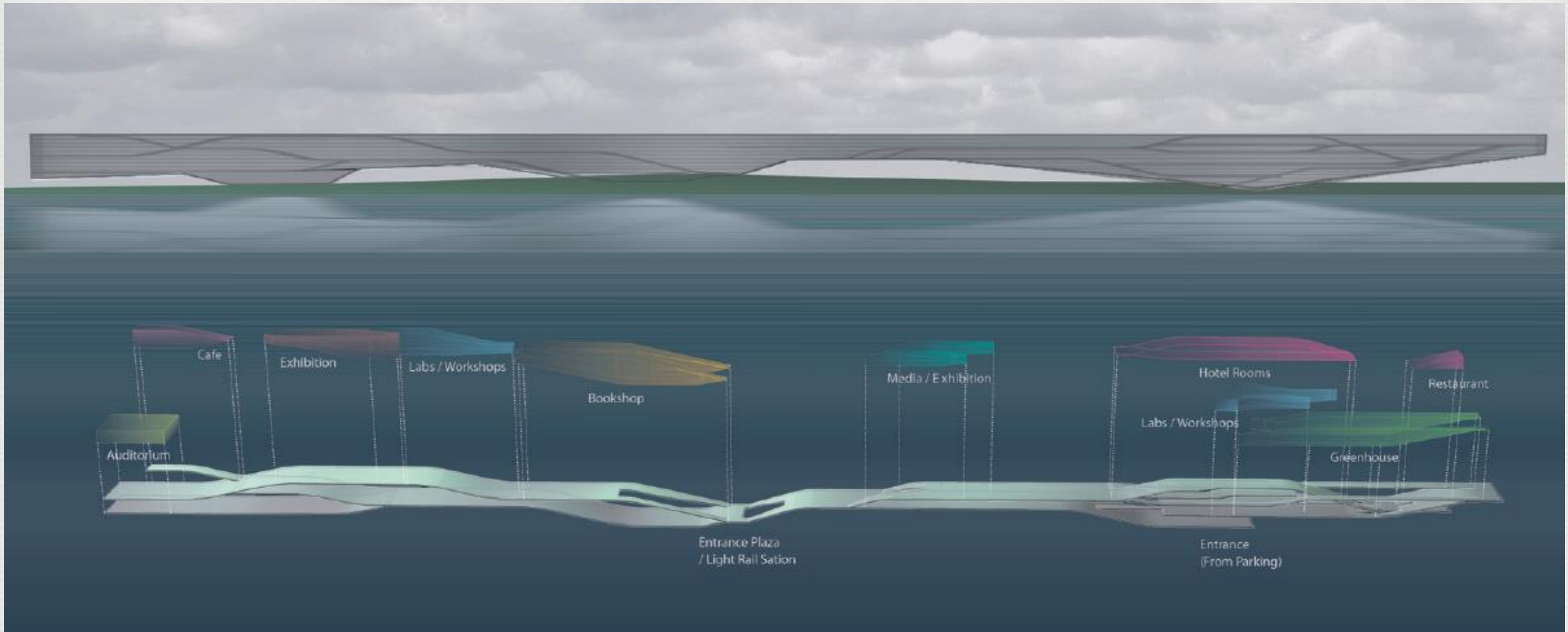
MUSD



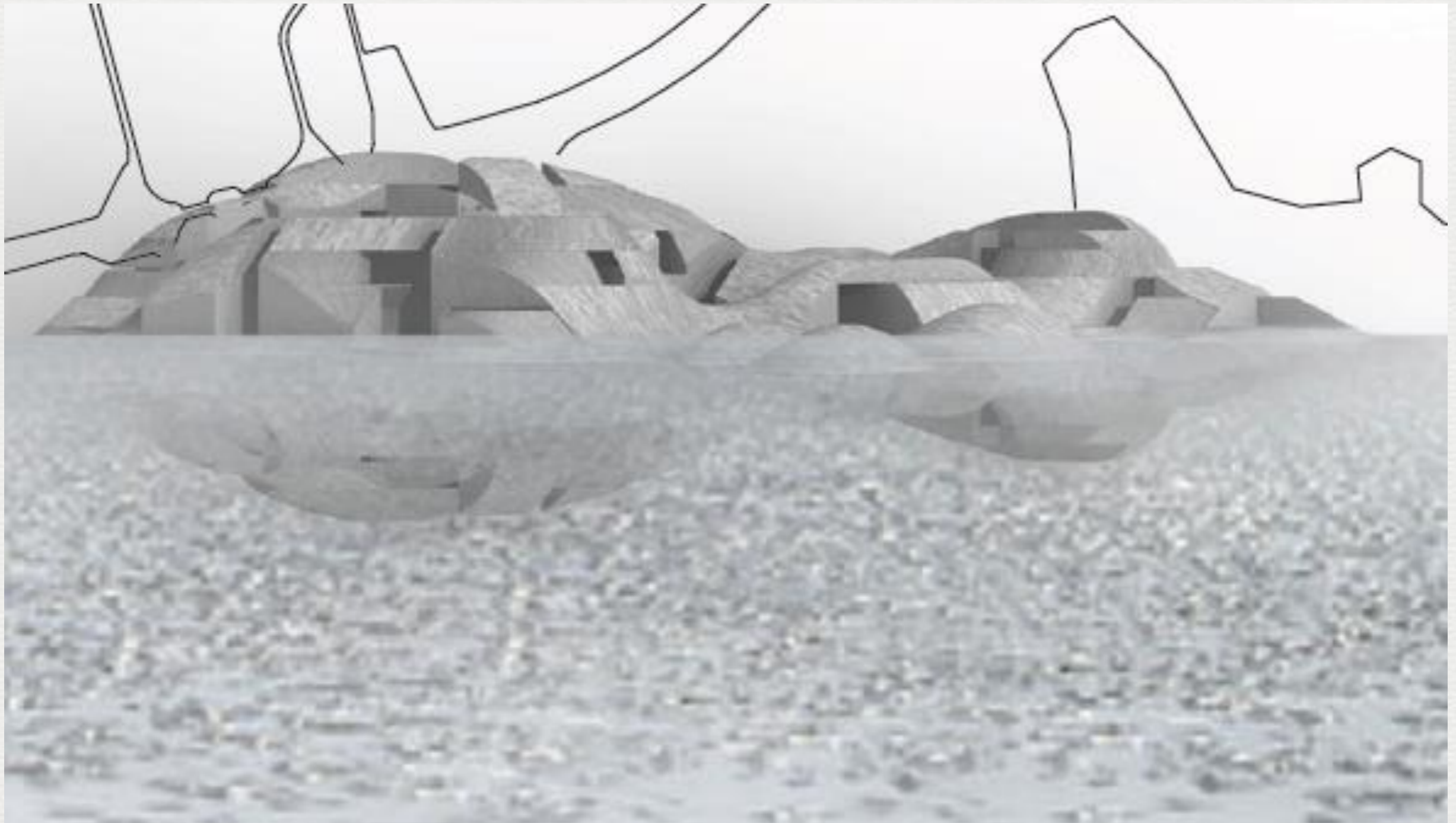
Changing Perspectives



Infinite Horizon



Soms Atoll



Sphere



possibility to move
exhibition and
workshop rooms upwards
and downwards, also
change the environment
into water, ice, fog,
soil with plants, etc.
depending on host
company's wishes

exhibition and workshop
rooms could be in
various types of volumes
with interconnections.
volumes can be
transformed also
environment can be add
and changed just like in
transformation scheme

current scheme of
layout in the dome
with circular
communication in
between open space
lofts

The Turnaround

