



LIBBIO
Lupin
beauty
from
marginal
soils

**Rob van Haren &
Irmgard Starmann**



**Hanzehogeschool
Groningen**

University of Applied Sciences



Lupin Bioeconomy
Development

LIBBIO: *Lupinus mutabilis* for Increased Biomass from marginal lands and value for BIOrefineries



Horizon 2020
European Union Funding
for Research & Innovation



**Bio-based Industries
Consortium**

This project has received funding from the Bio Based Industries Joint Undertaking under the European Union's Horizon 2020 research and innovation programme under grant agreement No 720726.

Biobased Industries Joint Undertaking

The Bio-Based Industries Joint Undertaking is a new €3.7 billion Public-Private Partnership between the [EU](#) and the [Bio-based Industries Consortium](#).

Operating under Horizon 2020, it is driven by the Vision and Strategic Innovation and Research Agenda (SIRA) developed by the industry.



A major public and private effort

- €3.7 billion investments in bio-based innovation from 2014-2020;
- €975 million of EU funds (Horizon 2020) and €2.7 billion of private investments
- Leveraging capital markets and additional private and public funds (e.g. synergies with EU Structural Funds).

Focus

- **Feedstock:** foster a sustainable biomass supply with increased productivity and building new supply chains
- **Biorefineries:** optimise efficient processing through R&D and demonstrate their efficiency and economic viability at large-scale demo/flagship biorefineries
- **Markets, products and policies:** develop markets for bio-based products and optimise policy frameworks

share your talent. move the world.

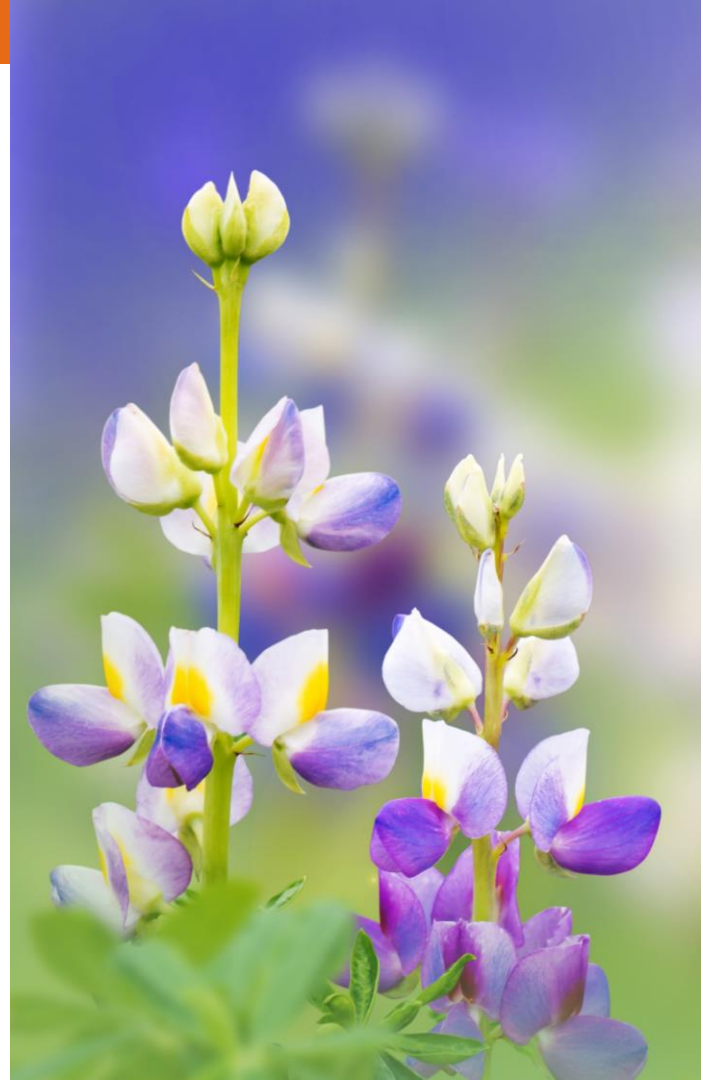
LIBBIO

The LIBBIO project is about researching the potential of Andes Lupin for breeding cropping and biorefinery. 14 partners from 8 different EU countries cooperate together. The project is from 2016 to 2020 and has a budget of 5mio€



European
Commission

Horizon 2020
European Union funding
for Research & Innovation



LIBBIO partners

- 14 partners from 8 countries
- SME's and research institutes

Iceland

Netherlands

Germany

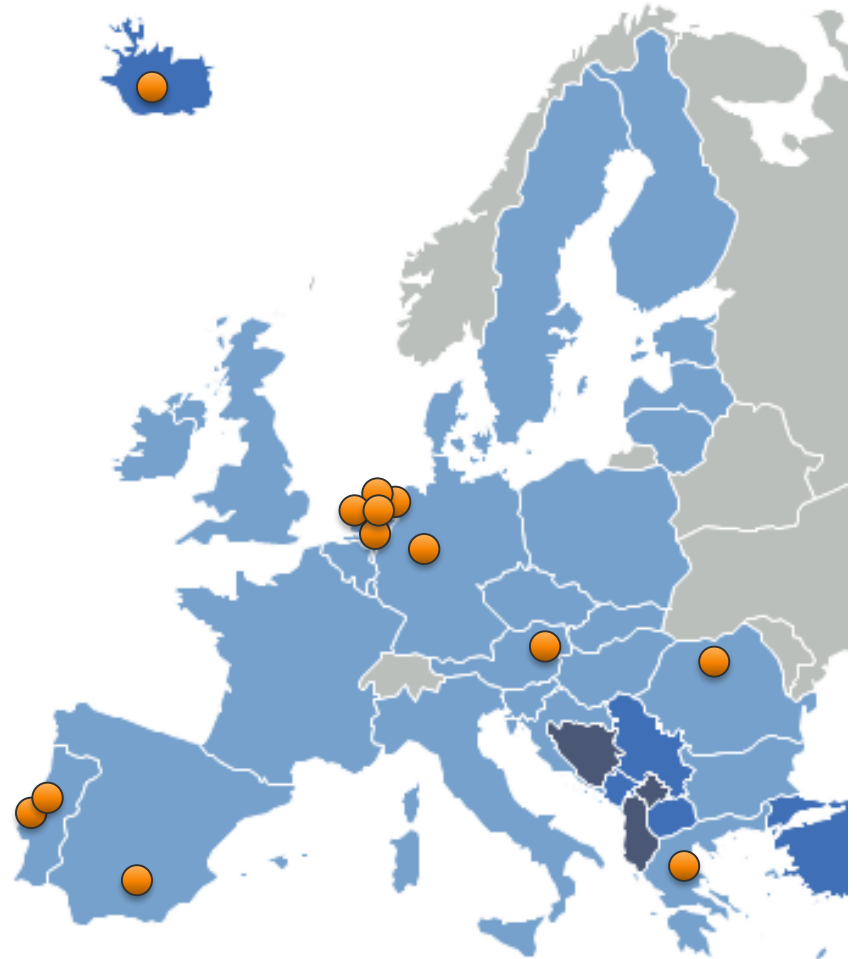
Portugal

Spain

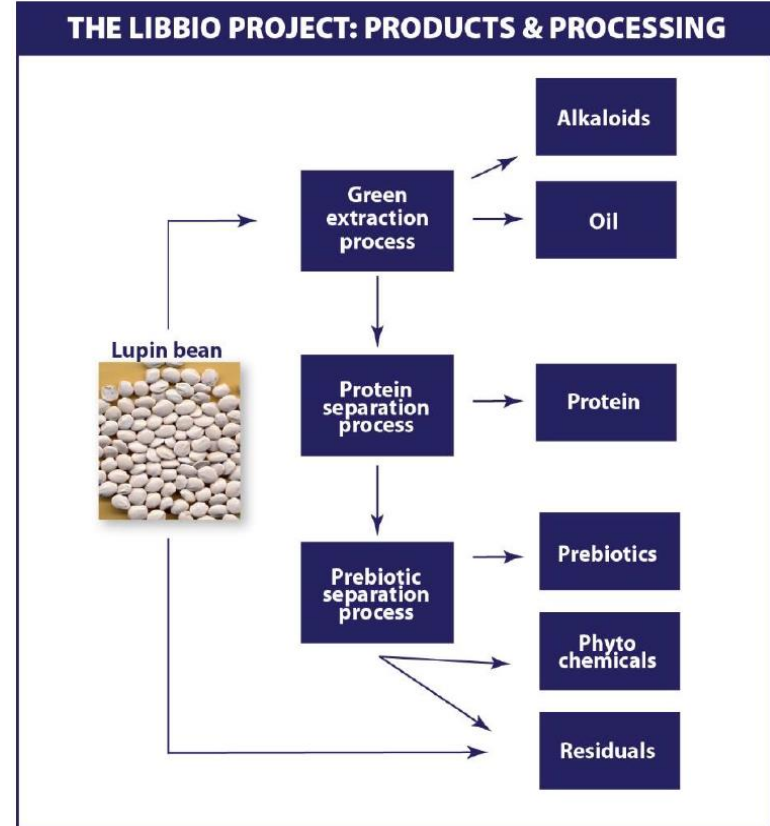
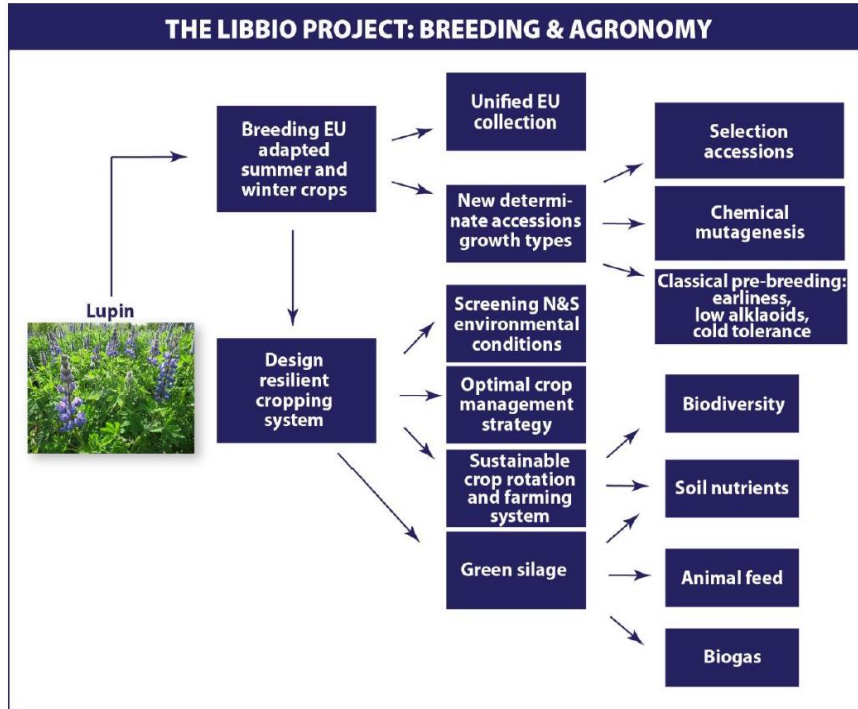
Greece

Romania

Austria



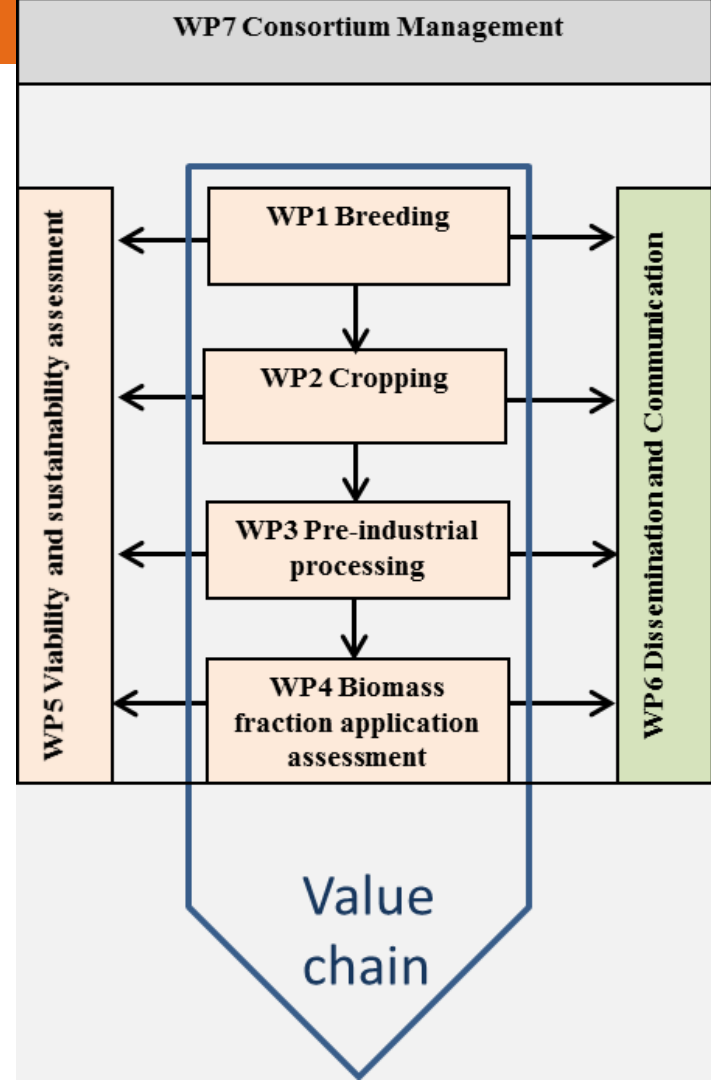
LIBBIO workpackages



LIBBIO

workpackages

The LIBBIO project is organised according to the potential value chain



Andean lupin advantages

- Andean lupin grows on marginal lands
- Andean lupin for
 - ✓ Bean production (4 ton/ha)
 - ✓ Green biomass production (16 ton dm/ha)
- Soil conservation
- Soil nitrogen fixation and phosphate mobilisation



LIBBIO

- Pre-industrial processing is developed and optimized for the lupin. New product development will create new opportunities. Techno-economical evaluation of the supply chain will assess agricultural viability, sustainability and effect on farm and biorefinery income.



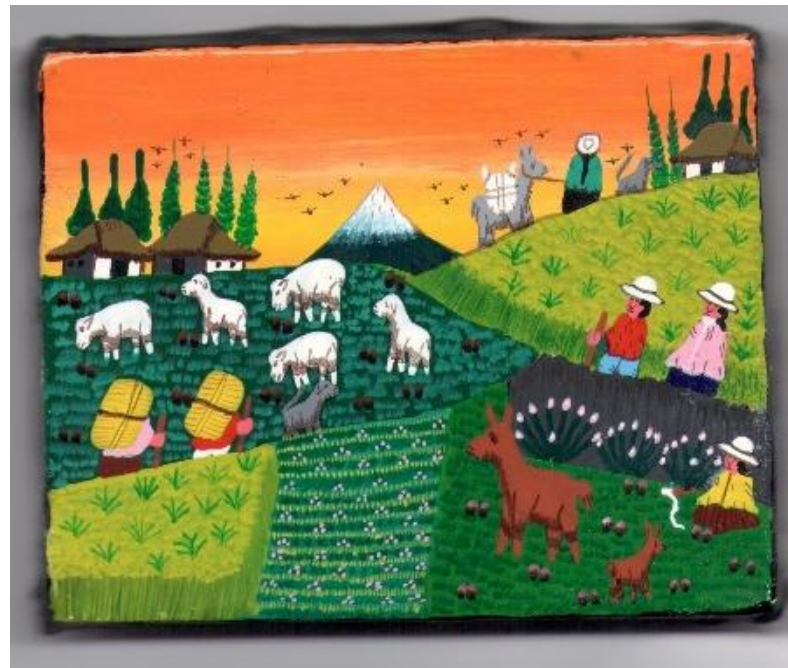
European
Commission

Horizon 2020
European Union funding
for Research & Innovation

share your talent. move the world.

Andean Lupin: farmer economic benefits

- Scenario analysis for virtual Andean bean cropped in EU
- Comparison with winter wheat in NL, DE, F, RO, PL
- Compared with world market prices for soy bean oil and soy bean meal
- Years 2011-2013



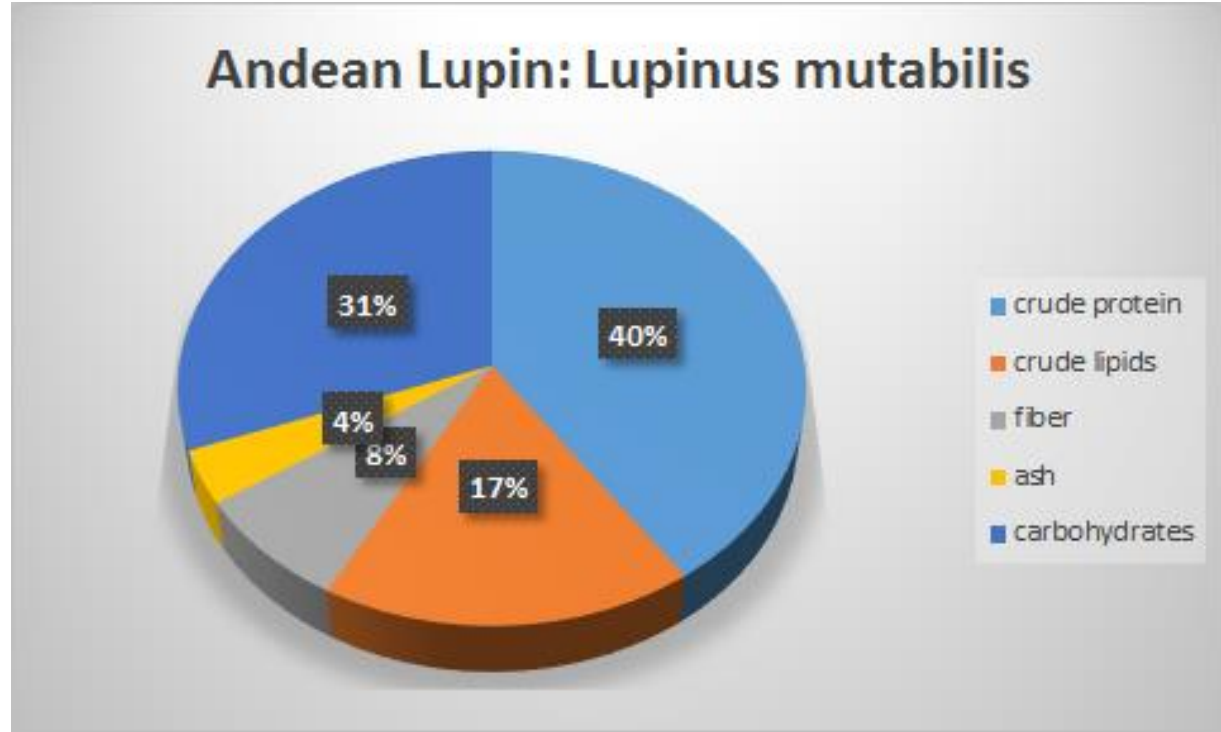
European
Commission

Horizon 2020
European Union funding
for Research & Innovation

share your talent. move the world.

Advantages Andean Lupin

- Rich in proteins and lipids
- Comparable with soy bean



European
Commission

Horizon 2020
European Union funding
for Research & Innovation

share your talent. move the world.

Andean lupin composition

composition lupin seeds and other major protein-oil crop

material	unit	L.albus white lupin	L.angustifolius bleu lupin	L.luteus yellow lupin	L.mutabilis Andean lupin	G.max Soy bean	Sunflower seed	Rapeseed
moisture	g /100 g fw	8.6	9.0	9.4	8.1	8.54	4.73	9.4
metabolic energy	kJ/ 100 g dw	2078	2032	2164	2307	2040	2565	1920
crude protein	g/100 g dw	38.2	33.9	42.2	43.3	39.9	21.8	35.8
crude lipids	g/100 g dw	11.2	6.3	5.5	18.9	21.8	54.0	1.4
fiber	g/100 g dw	8.9	16.0	15.8	8.2	10.2	9.0	16.0
ash	g/100 g dw	3.4	3.0	3.8	3.9	5.3	2.8	7.1
carbohydrates	g/100 g dw	39.3	41.0	38.8	32.9	33.0	21.0	48.0



European
Commission

Horizon 2020
European Union funding
for Research & Innovation

share your talent. move the world.

Andean lupin: oil & protein production

	Oil seed rape (UK)	Sun-flower	Soybean	Andean lupin <i>L.mutabilis</i> (JKI pre-breeding field study years 2010-2014)
Oil production ton/ha/year	1,3-1,6	0,8	0,3-0,6	1,0-1,4
Protein production ton/ha/year	0,6-0,8	0,6-0,9	0,6-1,2	1,7-2,8



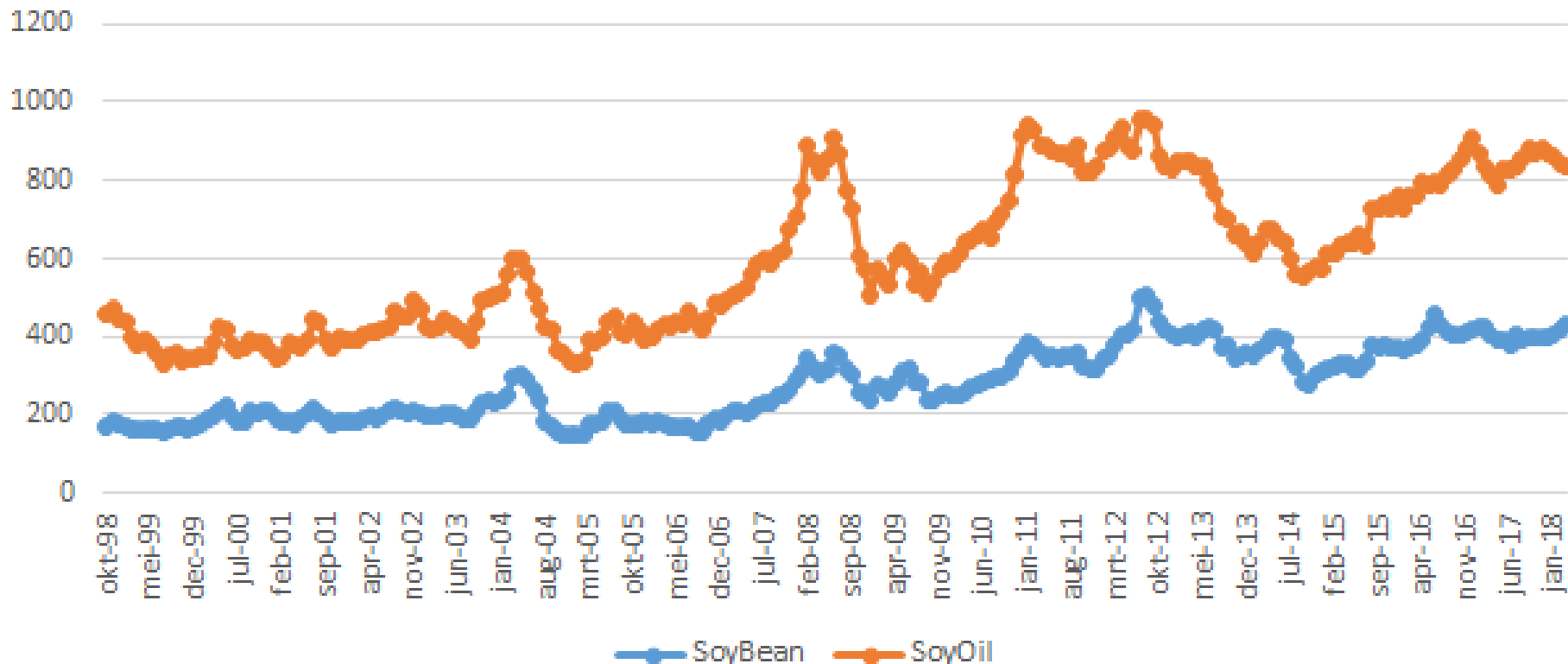
European
Commission

Horizon 2020
European Union funding
for Research & Innovation

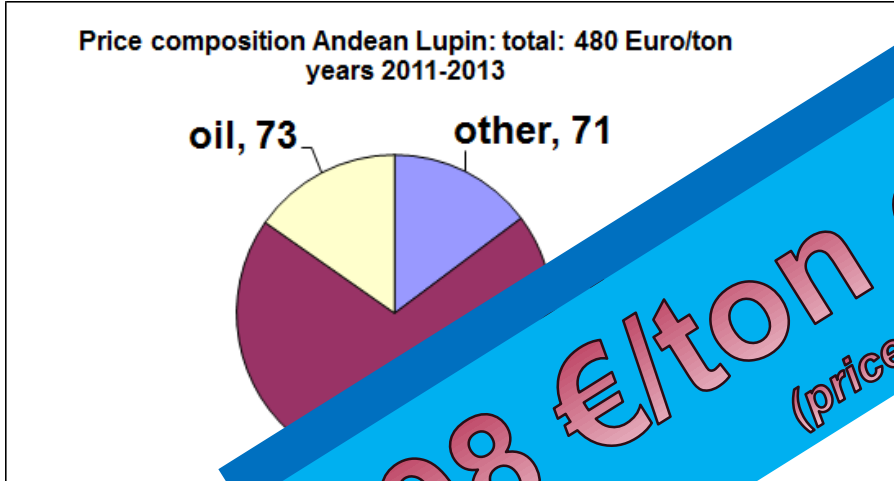
share your talent. move the world.

World Market Prices SoyBean and SoyBean Oil

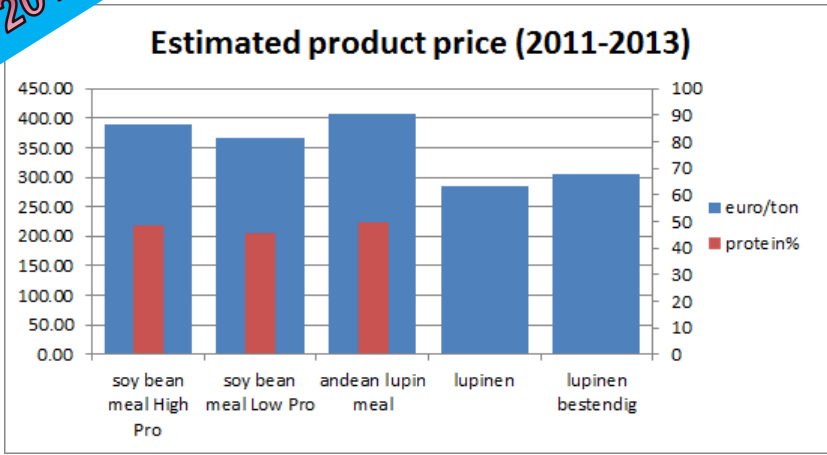
€/ton (source indexmundi)



Calculation product price



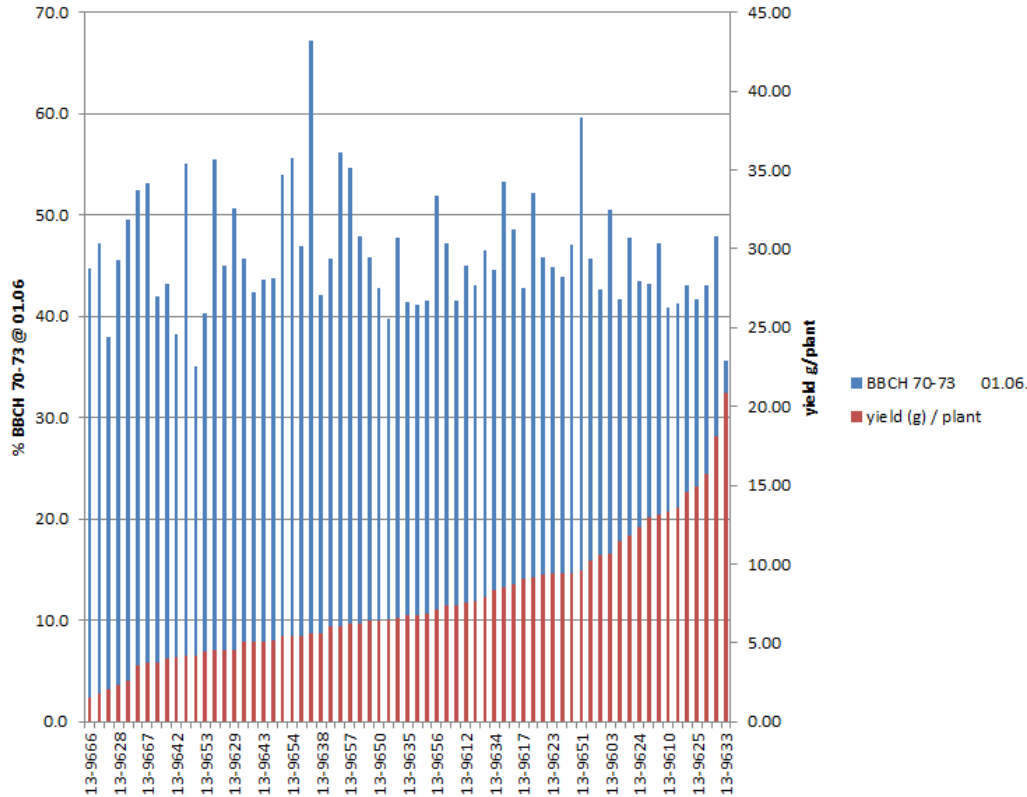
398 €/ton or 0,40ct/kg
 (price level 2015-2017)



Horizon 2020
 European Union funding
 for Research & Innovation

Expected Andean Lupin Crop yields

Crop development@01.06 and yield/plant (2013)



		yield t/ha		
		plant density/m2		
year	yield g/plant	20	30	50
2013	15	3	4.5	7.5
	20	4	6	10
2014	24	4.8	7.2	12
	29	5.8	8.7	14.5

field experiments in Poland:
1,5 – 2,7 ton/ha

Seed densities 60-120/m² in 2011 and 2012

Pszczółkowska A., etal A. 2016. *Incidence of seed-borne fungi on Lupinus mutabilis depending on a plant morphotype, sowing date and plant density.* J. Elem., 21(2): 501-512. DOI: 10.5601/jelem.2015.20.3.888

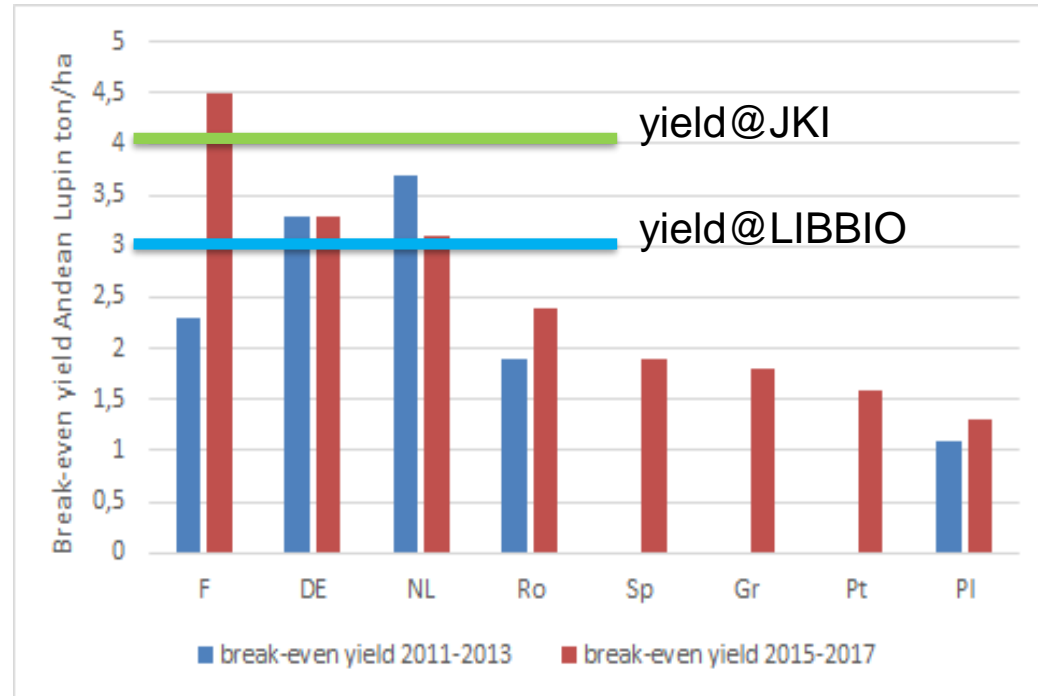
share your talent. move the world.

Agronomical perspective

study WUR-LEI 2014 & JKI 2014, LIBBIO 2019

- LIBBIO yield: possible 3-4 ton/ha
- JKI: possible yield: 4-7 ton/ha (*top 5 accessions, 3 years*)
- Break-even yields with winter wheat (ton/ha)

	2013	2017
- F	2,3	4,5
- DE	3,3	3,3
- NL	3,7	3,1
- Ro	1,9	2,4
- Sp		1,9
- Gr		1,8
- Pt		1,6
- Pl	1,1	1,3

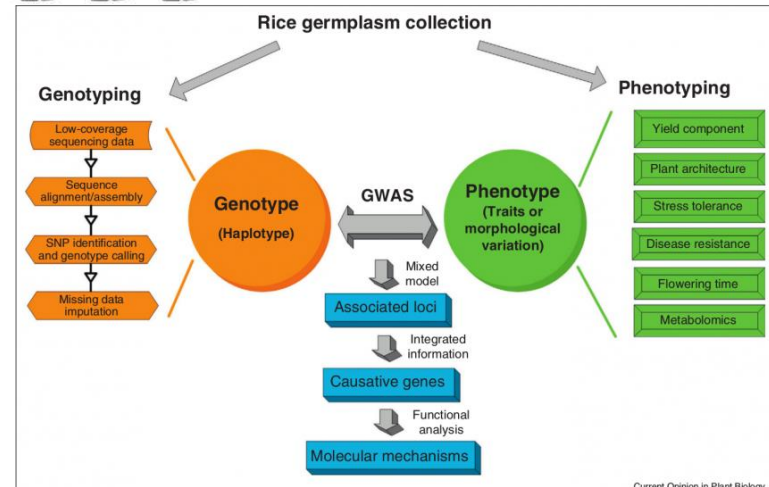
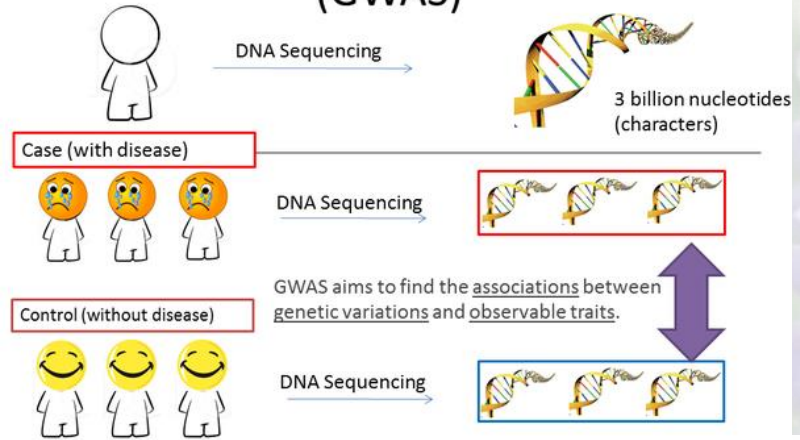




Activities performed: Breeding

- Tool development with new genetic technologies (nonGMO) such as as GWAS for assessing and using existing genetic variability and creating tools (genetic markers) for breeding.

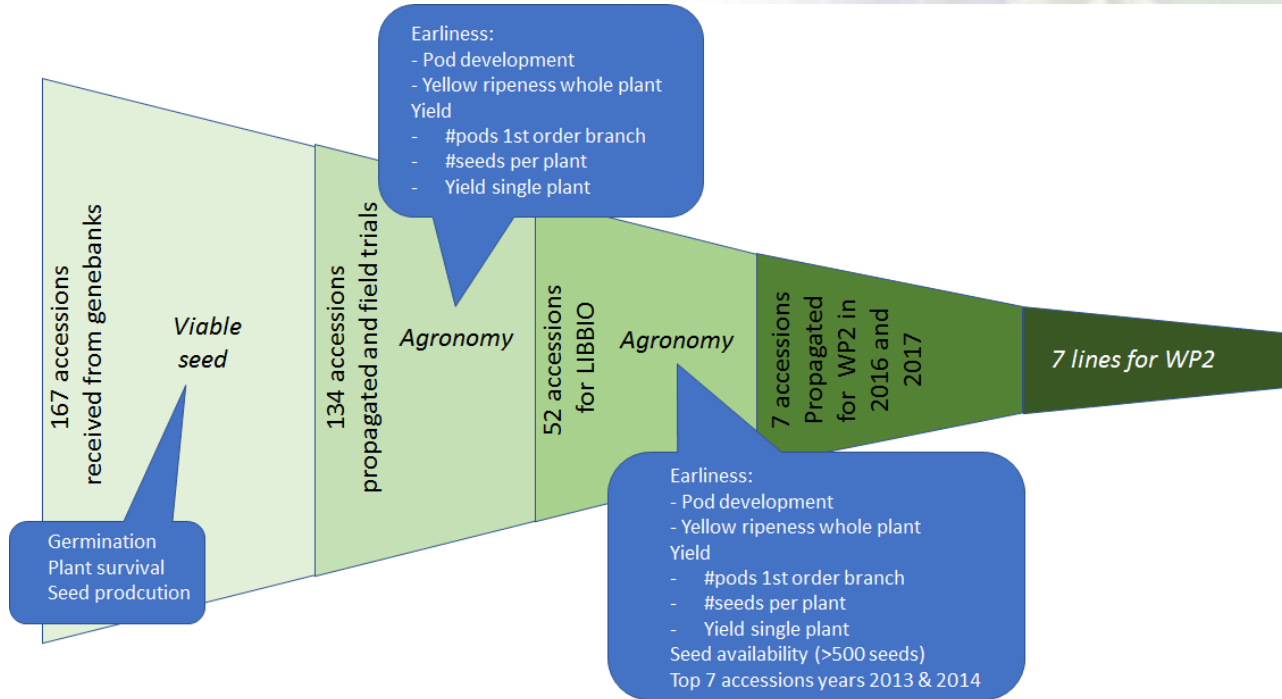
Genome-wide Association Study (GWAS)





Activities performed

➤ Selection funnel JKI prebreeding collection, activities started in 2009





Activities performed

high yielding accessions for improved harvesting and processing

- Development of protocols for phenotyping accessions for GWAS, including protocols for chemical characterization biomass composition
- Seed propagation for GWAS

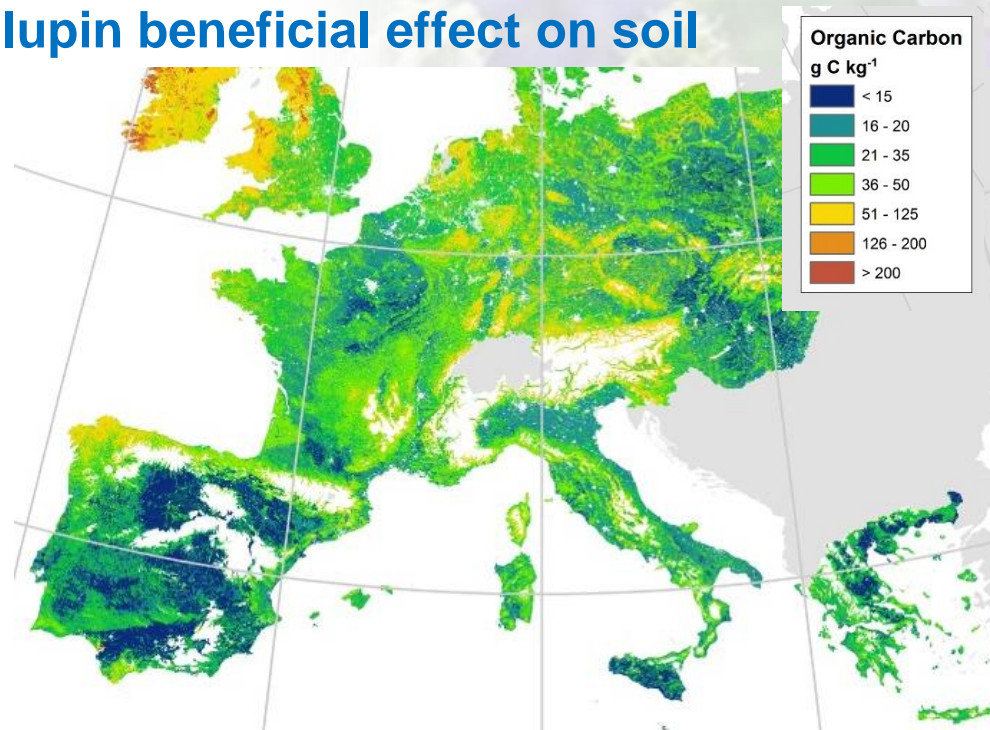


Field trial in ISA, Lisbon Portugal in February/March 2018. Field with 25 accessions in randomized 3 block design with 20 plants/plot with 30cm spacing between lines.

Activities performed:

Task 5.1 Assessment of lupin beneficial effect on soil

- Main activities: protocol development for inclusion in activities of WP2
 - Protocols for root sampling
 - Harmonizing protocols for soil nutrient analysis
 - Protocol for fast bioassay for soil biodiversity activity for decomposition Soil Organic Matter





Lupin Bioeconomy
Development

Activities performed: Task 5.1 Assessment of lupin beneficial effect on soil

- Main activities especially in Iceland due to its unique soil conditions
- Soil measurements are included of protocols in WP2.
- Litterbag Tea Bag Index
- Root augering



share your talent.

Benefits for people and planet

- High added value products for consumers:
 - Healthy foods
 - Natural anti-aging cosmetics
 - New biomaterials
- Alternative for GMO soy
- Contribution to biodiversity
- Nitrogen fixation in soils
- Prevention soil-erosion
- Increased soil carbon sequestration



European
Commission

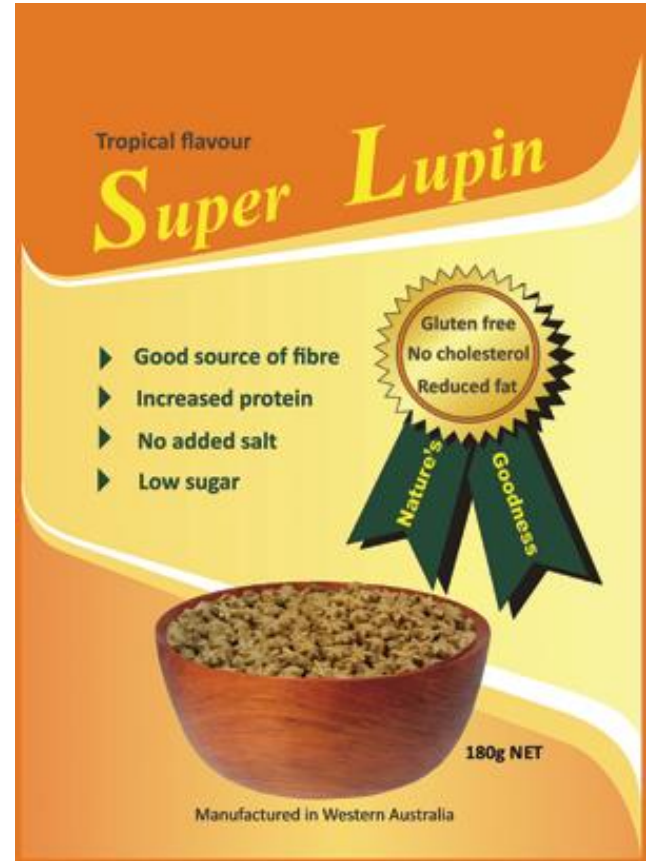
Horizon 2020
European Union funding
for Research & Innovation

share your talent. move the world.

LIBBIO applications

Biomass fraction properties and applications assessment (food, feed and non-food)

- Oil composition, properties and applications
- Protein composition properties and applications
- Oligosaccharides, alkaloids and lecithins
- Other applications
- Green silage



share your talent. move the world.

LIBBIO: healthy and delicious food

- Oil based
 - Mayonnaise, Margarine
- Protein based
 - Milk, Yoghurt, Ice cream
- Prebiotic carbohydrates
 - Stachyose & Raffinose
- Functional ingredients
 - Foaming, gelling, emulsification, stabilisation, color



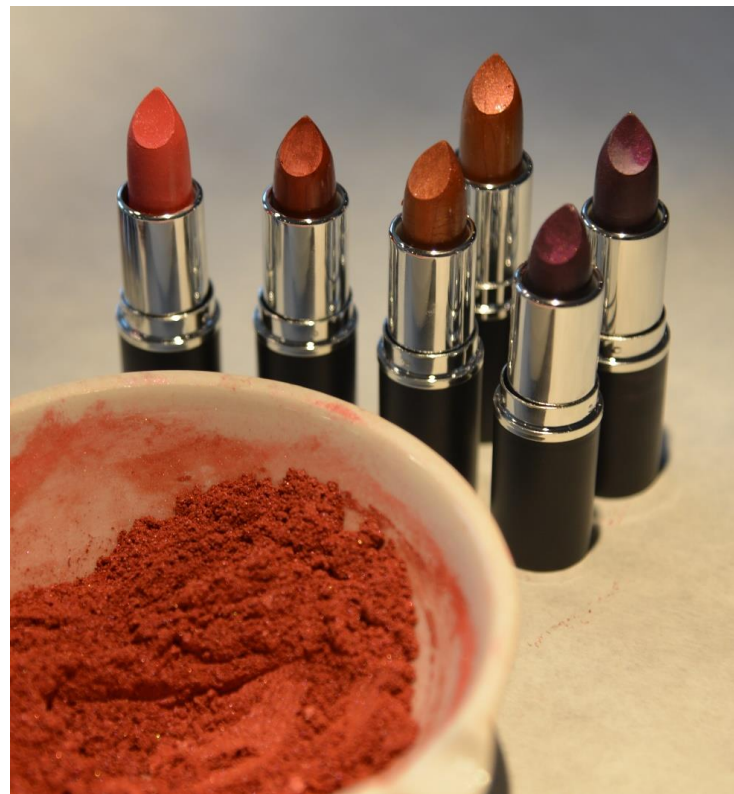
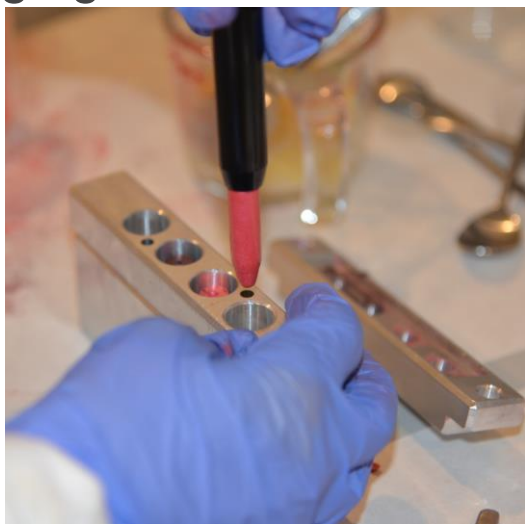
European
Commission

Horizon 2020
European Union funding
for Research & Innovation

share your talent. move the world.

LIBBIO: cosmetics with lupin bioactives

- Caring decorative cosmetics lips and eyes
- Anti-aging skin care cosmetics



European
Commission

Horizon 2020
European Union funding
for Research & Innovation

LIBBIO oils

- Andean lupin has excellent fatty acid profile
- More than 80% unsaturated fatty acids
- Fatty acid profile is comparable with soy bean oil
- Andean oil can replace soy bean oil in many food applications
- Andean lupin oil high in γ -tocopherol which prevents lipid oxidation



European
Commission

Horizon 2020
European Union funding
for Research & Innovation

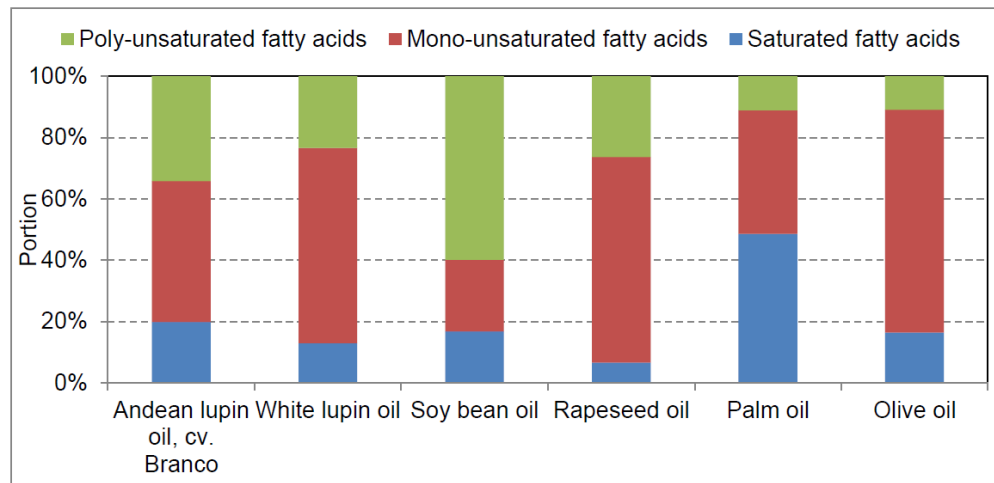
share your talent. move the world.

Fatty acid composition

- Andean lupin oil is high in unsaturated fatty acids



Fatty acid	Lupin oil, Andean lupin cv. Branco	Lupin oil, White lupin	Soy bean oil	Palm oil	Olive oil	Rapeseed oil
Myristic acid (C14:0)	0.1	0.1	< 0.1	0.9	< 0.1	< 0.1
Palmitic acid (C16:0)	11.1	6.4	10.7	41.9	13.4	4.9
Palmitoleic acid (C16:1)	0.2	0.3	< 0.1	0.2	1.4	0.3
Stearic acid (C18:0)	7.0	1.6	5.02	5.2	2.6	1.6
Oleic acid (C18:1)	45.5	56.9	23.2	40.0	70.9	60.4
Linoleic acid (C18:2)	31.7	14.6	53.2	10.7	9.9	18.9
Linolenic acid (C18:3)	2.5	8.4	6.51	0.4	1.0	10.0
Arachidic acid (C20:0)	0.7	1.0	0.45	0.4	0.4	0.7
Eicosenic acid (C20:1)	0.2	4.8	< 0.1	< 0.1	< 0.1	1.7
Eicosadienoic acid (C20:2)	< 0.1	0.3	< 0.1	< 0.1	< 0.1	< 0.1
Behenic acid (C22:0)	0.8	3.1	0.45	< 0.1	0.1	0.4
Eruic acid (C22:1)	< 0.1	1.4	< 0.1	< 0.1	< 0.1	0.5
Lignoceric acid (C24:0)	0.2	0.7	< 0.1	< 0.1	< 0.1	< 0.1



LIBBIO proteins

- Andean lupin has most of the relevant amino acids for healthy products
- Drinks: milk, smoothies
- Yoghurts
- Ice cream



European
Commission

Horizon 2020
European Union funding
for Research & Innovation

share your talent. move the world.

LIBBIO: feed for animal nutrition

- Feed for
 - Pigs
 - Poultry
 - Cattle
- Andean lupin can replace soy bean !



Andean lupin for pig feed NO soy

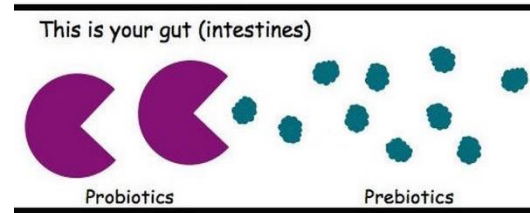
Andean lupin has an amino acid profile which is comparable with soy bean



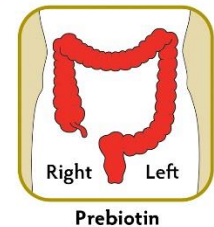
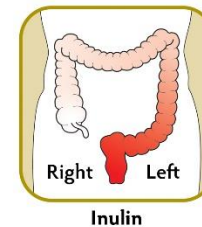
Recipe for pig starter feed without soy bean		
Ingrediënt		%
Gerst	rye	27.2
Tarwe	wheat	28.0
Maïs	corn	4.8
Tarwegries 2	wheat	1.3
Profit P1	Profit P1	5.3
Lupinen	Bleu lupin	10.9
Raapschroot	rapeseed meal	9.9
Zonnepitschroot 28 P	sunflower meal	7.4
Palmolie	palm oil	0.5
Melasse riet	melasse	1
Overig	rest	3.7
nutrienten		
ruw eiwit	total protein	167.8
ruw vet	total fat	33.2
ruwe celstof	fibre	72
EW*100		108
iv Lysine		9.07
FK		143.9

LIBBIO prebiotics

- Andean lupin has no starch as carbohydrates
- Andean lupin has oligosaccharides as carbohydrates
- Stachyose and raffinose
- Andean lupin has low glycemic index
The glycemic index or glycaemic index (GI) is a number associated with a particular type of food that indicates the food's effect on a person's blood glucose



THE COLON Where do the prebiotics act?



European
Commission

Horizon 2020
European Union funding
for Research & Innovation

Prototypes made of lupin



LIBBIO

A H2020 project with great potential for unlocking added value from marginal soils in Europe with a new crop and new value chain

Benefits for farmer, consumer and EU society



European
Commission

Horizon 2020
European Union
for Research &