



EnTranCe

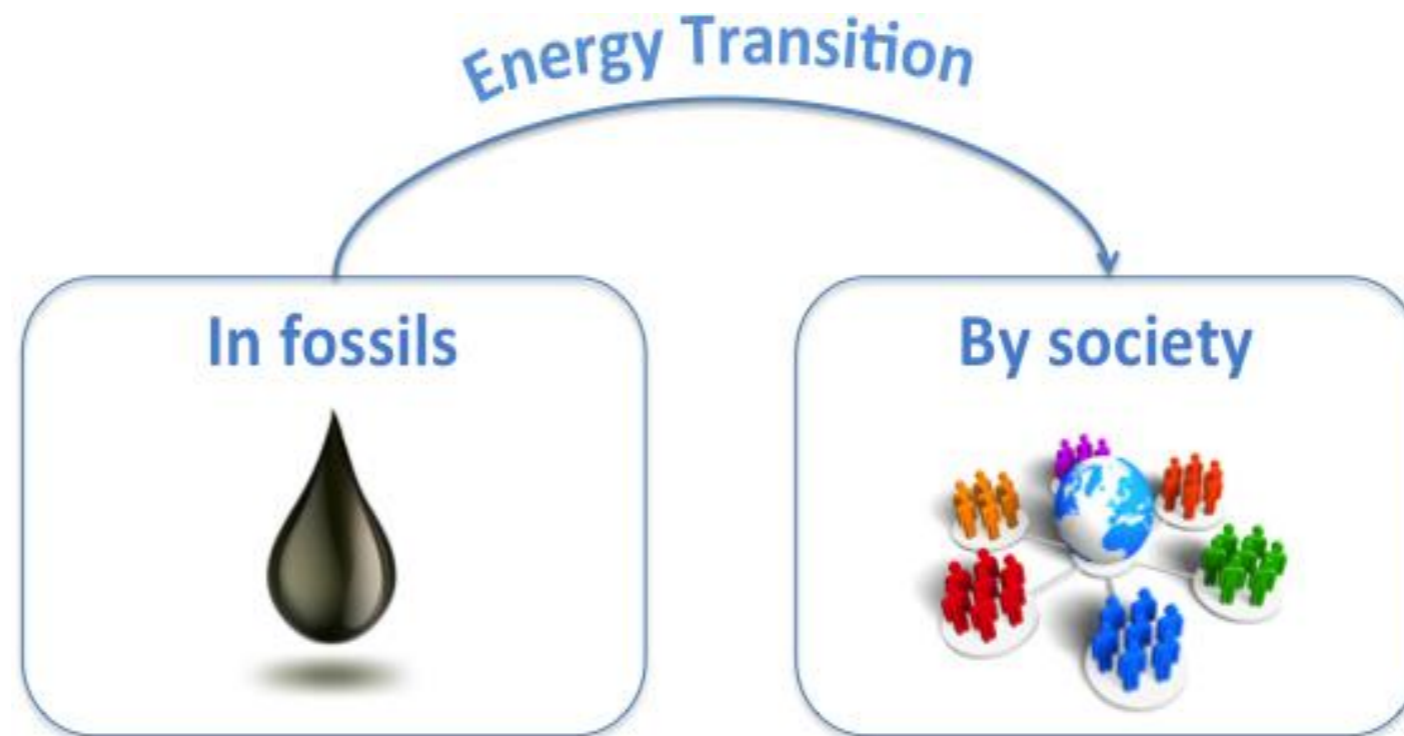
ENERGY TRANSITION CENTRE

The balancing function in energy transition

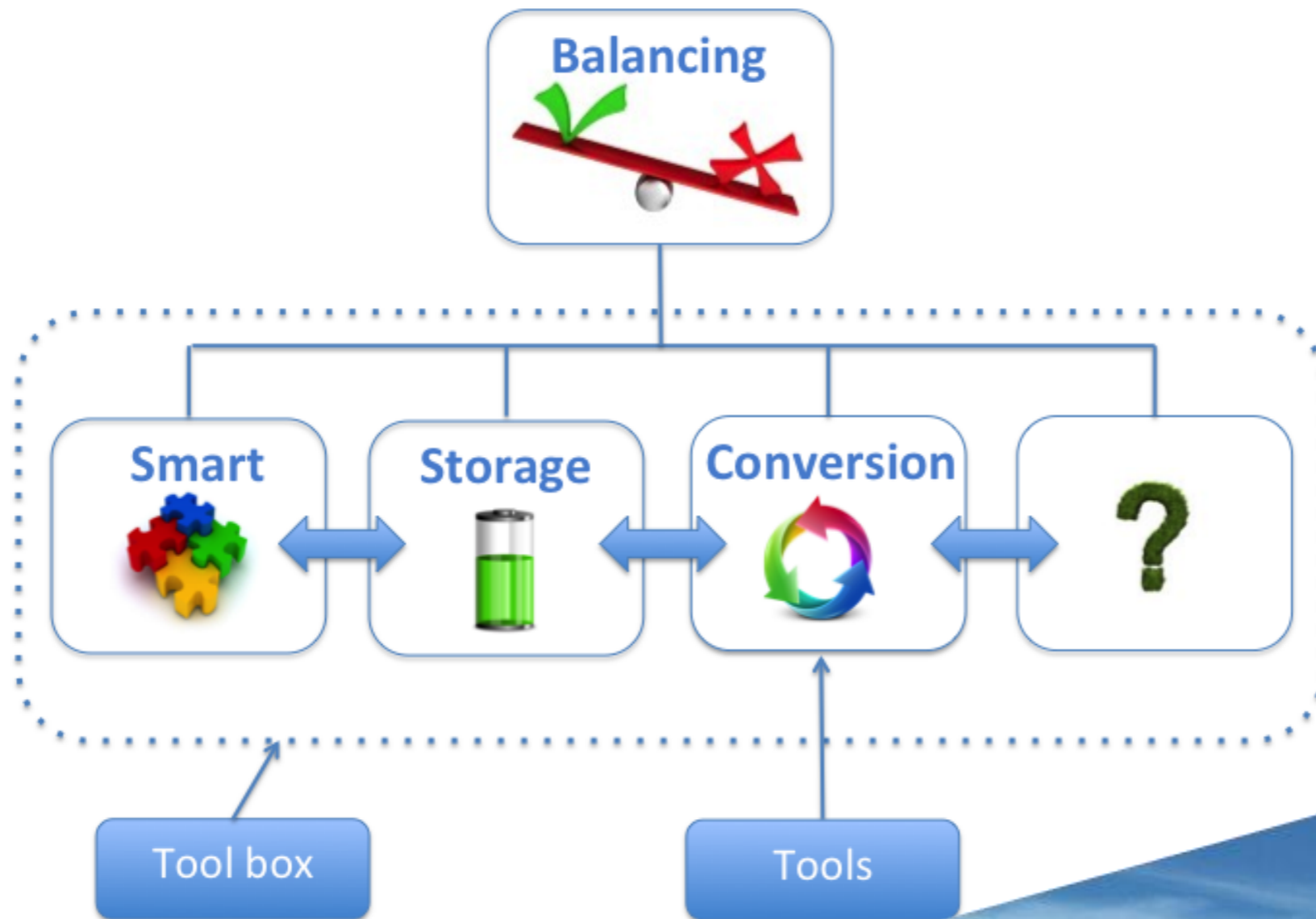


Flexibility

- Major change towards sustainability
- Energy Transition
- Need for Flexibility



Tool box



Balancing



Physical scale

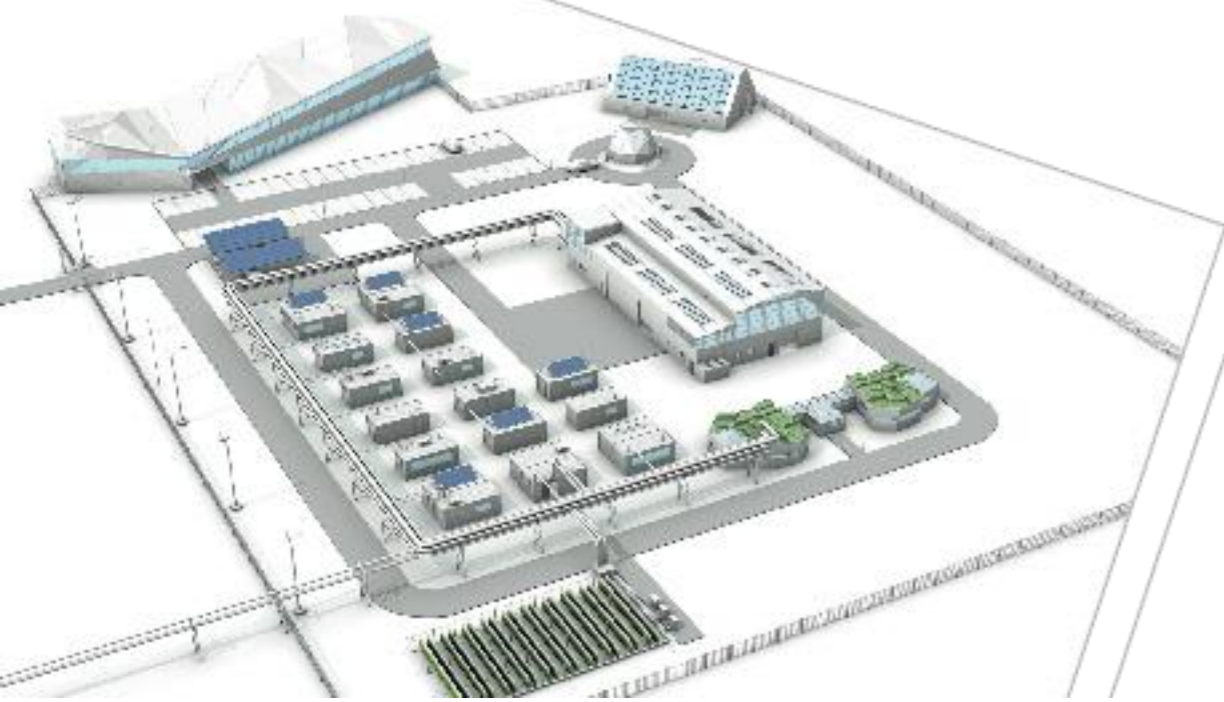


EnTranCe

ENERGY TRANSITION CENTRE

- Focus: People in Power
- Process: Open innovation
- Area: 55000 m²





EnTranCe

ENERGY TRANSITION CENTRE

- Wim van Gemert, professor in Energy Transition, Hanze University of Applied Science and co-initiator of EnTranCe
- Jeroen van den Berg, CE of EnTranCe and programme manager Hanze Research Centre Energy

